

"Bacterial" Genome Structures

4BIM - AMIG - INSA

M. Bailly-Bechet, from J. Lobry

Université Claude Bernard Lyon I – France

<http://pbil.univ-lyon1.fr/members/mbailly/AMIG.html>
marc.baillybechet@gmail.com
laurent.duret@univ-lyon1.fr

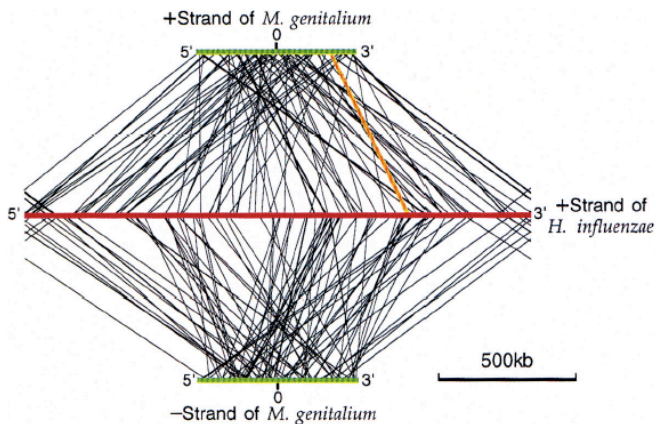
Outline

- 1 Introduction
- 2 Topology & #
- 3 Genome size
- 4 Replichores and gene orientation
- 5 Chirochores
- 6 G+C content
- 7 Codon usage
- 8 X-rated structure

X-rated structure: gene order evolution

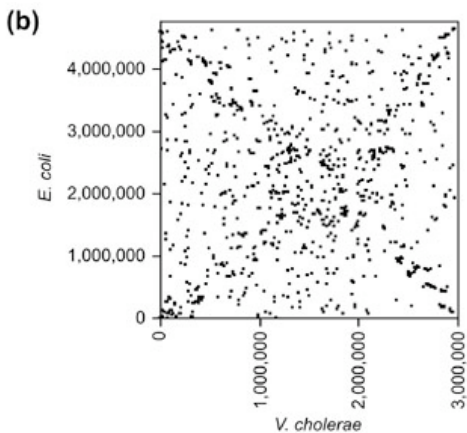
- 1 Introduction
- 2 Topology & #
- 3 Genome size
- 4 Replichores and gene orientation
- 5 Chirochores
- 6 G+C content
- 7 Codon usage
- 8 X-rated structure**

Gene order comparison in bacteria

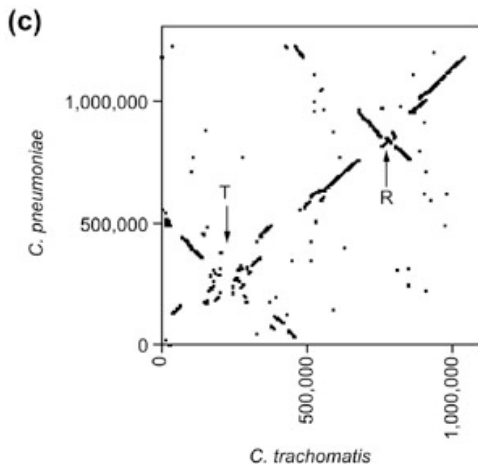


Watanabe *et al.* (1997) *J. Mol. Evol.*, **44**:s57-s64.

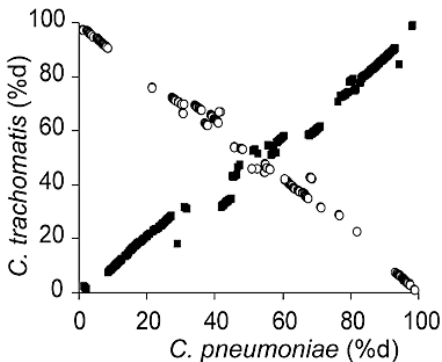
Genomic dot plots (*E. coli* vs. *V. cholerae*)



Eisen *et al.* (2000) *Genome Biology*, 1:1–9.

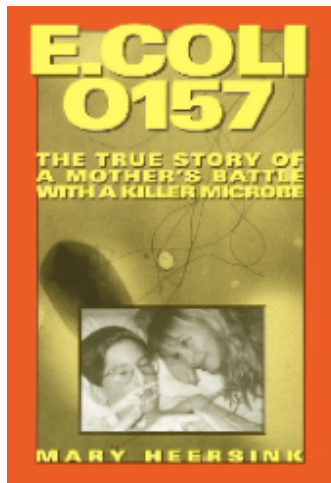
Genomic dot plots (*C. pneumoniae* vs. *C. trachomatis*)

Eisen *et al.* (2000) *Genome Biology*, 1:1–9.

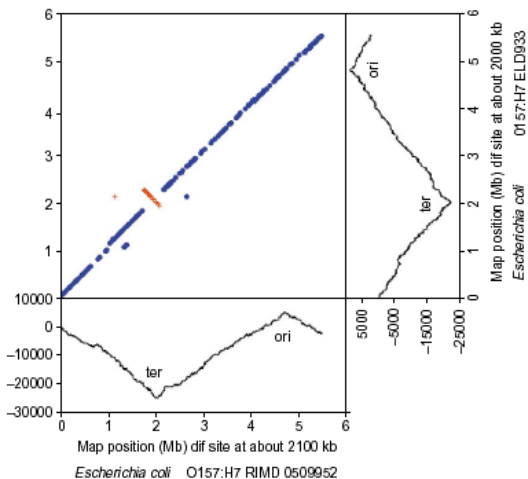
Genomic dot plots (*C. pneumoniae* vs. *C. trachomatis*)

Tillier & Collins (2000) *Nature Genetics*, **26**:195–197.

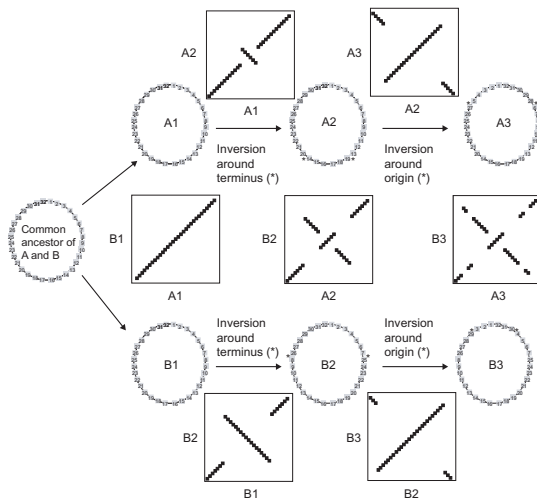
Genomic dot plots (O157:H7 vs. O157:H7)



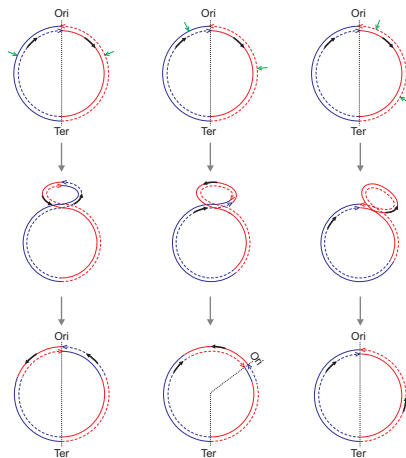
Genomic dot plots (O157:H7 vs. O157:H7)



Simulation of symmetric inversions



Three models for inversions



Mackiewicz *et al.* (2001) *Genome Biology*, 2:1–4.