

# Time Series Database Interface: R fame (TSfame)

June 6, 2011

## 1 Introduction

The code from the vignette that generates this guide can be loaded into an editor with `edit(vignette("TSfame"))`. This uses the default editor, which can be changed using `options()`. It should be possible to view the pdf version of the guide for this package with `print(vignette("TSfame"))`.

WARNING: Running these example will overwrite a fame database called "testvigFame.db". Beware, if by any chance you have a database with this name.

Once R is started, the functions in this package are made available with

```
> library("TSfame")
```

This will also load required packages *TSdbi*, *DBI*, *fame*, *methods*, and *tframe*. Some examples below also require *zoo*, and *tseries*.

The package *fame* may be installed but not functional because the Fame HLI code is not available. A warning will be issues and the vignette example will not work,

## 2 Using the Database - TSdbi Functions

This section gives several simple examples of putting series on and reading them from the database. (If a large number of series are to be loaded into a database, one would typically do this with a batch process in Fame.) The first thing to do is to establish a connection to the database:

```
> con <- TSconnect("fame", dbname = "testvigFame.db")
```

(It is also possible to establish connections to Fame databases using Fame server. See the section "Examples Using TSdbi with ets" below for more details.)

This puts a series called *vec* on the database and then reads is back.

```
> z <- ts(rnorm(10), start = c(1990, 1), frequency = 1)
> seriesNames(z) <- "vec"
> if (TSexists("vec", con)) TSdelete("vec", con)
> TSput(z, con)
> z <- TSget("vec", con)
```

If the series is printed it is seen to be a "ts" time series with some extra attributes.

*TSput* fails if the series already exists on the *con*, so the above example checks and deletes the series if it already exists. *TSreplace* does not fail if the series does not yet exist, so examples below use it instead. Several plots below show original data and the data retrieved after it is written to the database. One is added to the original data so that both lines are visible.

And now more examples:

```
> z <- ts(matrix(rnorm(20), 10, 2), start = c(1990, 1), frequency = 1)
> seriesNames(z) <- c("matc1", "matc2")
> TSreplace(z, con)

[1] TRUE

> TSget("matc1", con)

Time Series:
Start = 1990
End = 1999
Frequency = 1
 [1]  0.01383634 -1.19610669 -1.71397152  0.32812564 -0.79993500 -0.21352625
 [7]  0.21639587 -1.44080341  0.06856526 -0.56835155
attr(,"seriesNames")
[1] matc1
attr(,"TSmeta")
An object of class "TSmeta"
Slot "TSdescription":
[1] NA

Slot "TSdoc":
[1] NA

Slot "TSlabel":
[1] NA

Slot "serIDs":
[1] "matc1"

Slot "conType":
[1] "TSfameConnection"
attr(,"package")
[1] "TSfame"

Slot "DateStamp":
[1] "2011-06-06 18:52:32 EDT"

Slot "dbname":
```

```

[1] "testvigFame.db"

Slot "hasVintages":
[1] FALSE

Slot "hasPanels":
[1] FALSE

> TSget("matc2", con)

Time Series:
Start = 1990
End = 1999
Frequency = 1
[1] -1.106549047  1.548285070 -0.001178732 -0.179370648  0.251438630
[6]  0.583759443 -1.073157328  1.290090573  1.578791815 -0.741170463
attr("seriesNames")
[1] matc2
attr("TSmeta")
An object of class "TSmeta"
Slot "TSdescription":
[1] NA

Slot "TSdoc":
[1] NA

Slot "TSlabel":
[1] NA

Slot "serIDs":
[1] "matc2"

Slot "conType":
[1] "TSfameConnection"
attr("package")
[1] "TSfame"

Slot "DateStamp":
[1] "2011-06-06 18:52:32 EDT"

Slot "dbname":
[1] "testvigFame.db"

Slot "hasVintages":
[1] FALSE

```

```

Slot "hasPanels":
[1] FALSE

> TSget(c("matc1", "matc2"), con)

Time Series:
Start = 1990
End = 1999
Frequency = 1
      matc1      matc2
1990 0.01383634 -1.106549047
1991 -1.19610669  1.548285070
1992 -1.71397152 -0.001178732
1993  0.32812564 -0.179370648
1994 -0.79993500  0.251438630
1995 -0.21352625  0.583759443
1996  0.21639587 -1.073157328
1997 -1.44080341  1.290090573
1998  0.06856526  1.578791815
1999 -0.56835155 -0.741170463
attr("TSmeta")
An object of class "TSmeta"
Slot "TSdescription":
[1] NA

Slot "TSdoc":
[1] NA

Slot "TSlabel":
[1] NA

Slot "serIDs":
[1] "matc1" "matc2"

Slot "conType":
[1] "TSfameConnection"
attr("package")
[1] "TSfame"

Slot "DateStamp":
[1] "2011-06-06 18:52:32 EDT"

Slot "dbname":
[1] "testvigFame.db" "testvigFame.db"

Slot "hasVintages":

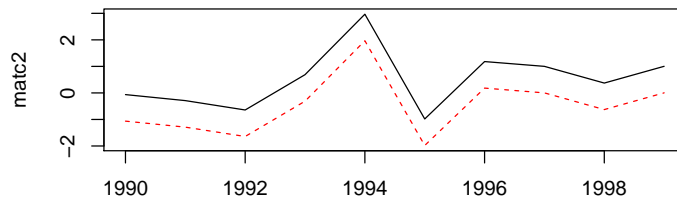
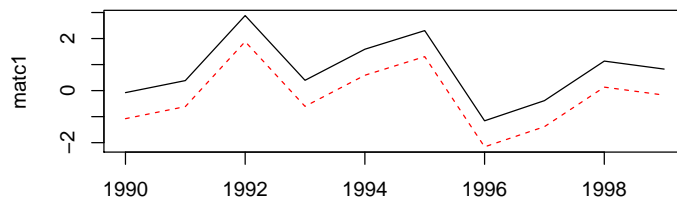
```

```
[1] FALSE
```

```
Slot "hasPanels":
```

```
[1] FALSE
```

```
> tfplot(z + 1, TSget(c("matc1", "matc2"), con), lty = c("solid",  
  "dashed"), col = c("black", "red"))
```



```
> z <- ts(matrix(rnorm(20), 10, 2), start = c(1990, 1), frequency = 4)  
> seriesNames(z) <- c("matc1", "matc2")  
> TSreplace(z, con)
```

```
[1] TRUE
```

```
> TSget(c("matc1", "matc2"), con)
```

|         | matc1       | matc2       |
|---------|-------------|-------------|
| 1990 Q1 | 0.52722497  | 0.07514407  |
| 1990 Q2 | -0.27274578 | 1.02738216  |
| 1990 Q3 | -0.57734599 | -1.14070403 |
| 1990 Q4 | -0.73893931 | -0.56148337 |
| 1991 Q1 | 2.33254834  | 1.15584398  |
| 1991 Q2 | 0.56887068  | 0.82305982  |

```

1991 Q3 -0.52542401  0.43094255
1991 Q4 -0.08430097  0.35067102
1992 Q1  0.67699244 -0.91334263
1992 Q2 -0.70864790 -0.72855804
attr(,"TSMeta")
An object of class "TSMeta"
Slot "TSdescription":
[1] NA

Slot "TSdoc":
[1] NA

Slot "TSlabel":
[1] NA

Slot "serIDs":
[1] "matc1" "matc2"

Slot "conType":
[1] "TSfameConnection"
attr(,"package")
[1] "TSfame"

Slot "DateStamp":
[1] "2011-06-06 18:52:33 EDT"

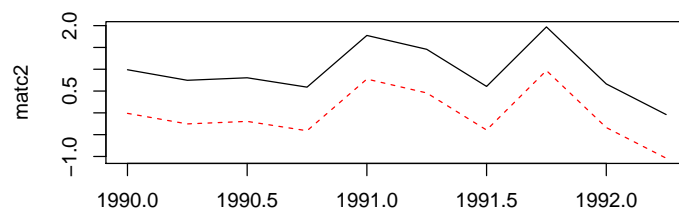
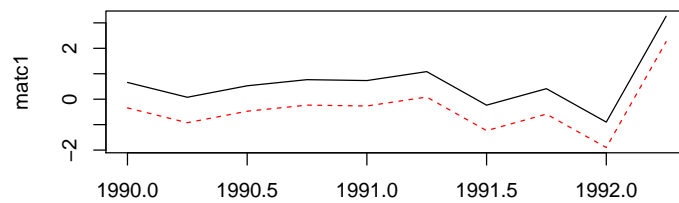
Slot "dbname":
[1] "testvigFame.db" "testvigFame.db"

Slot "hasVintages":
[1] FALSE

Slot "hasPanels":
[1] FALSE

> tfplot(z + 1, TSget(c("matc1", "matc2"), con), lty = c("solid",
  "dashed"), col = c("black", "red"))

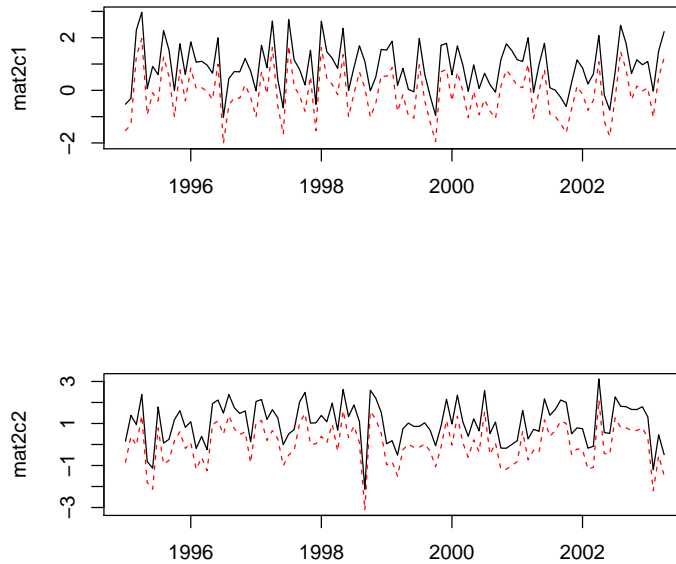
```



```
> z <- ts(matrix(rnorm(200), 100, 2), start = c(1995, 1), frequency = 12)
> seriesNames(z) <- c("mat2c1", "mat2c2")
> TSreplace(z, con)

[1] TRUE

> tfplot(z + 1, TSget(c("mat2c1", "mat2c2"), con), lty = c("solid",
  "dashed"), col = c("black", "red"))
```



The following extract information about the series from the database, although not much information has been added for these examples.

```
> TSmeta("mat2c1", con)
> TSmeta("vec", con)
> TSdates("vec", con)
> TSdescription("vec", con)
> TSdoc("vec", con)
```

Below are examples that make more use of *TSdescription* and *codeTSdoc*. Often it is convenient to set the default connection:

```
> options(TSconnection = con)
```

and then the *con* specification can be omitted from the function calls unless another connection is needed. The *con* can still be specified, and some examples below do specify it, just to illustrate the alternative syntax.

```
> z <- TSget("mat2c1")
> TSmeta("mat2c1")
```

```
An object of class "TSmeta"
Slot "TSdescription":
[1] "NA"
```

```

Slot "TSdoc":
[1] "NA"

Slot "TSlabel":
[1] NA

Slot "serIDs":
[1] "mat2c1"

Slot "conType":
[1] "TSfameConnection"
attr(,"package")
[1] "TSfame"

Slot "DateStamp":
[1] NA

Slot "dbname":
[1] "testvigFame.db"

Slot "hasVintages":
[1] FALSE

Slot "hasPanels":
[1] FALSE

```

Data documentation can be in two forms, a description specified by *TSdescription* or longer documentation specified by *TSdoc*. These can be added to the time series object, in which case they will be written to the database when *TSput* or *TSreplace* is used to put the series on the database. Alternatively, they can be specified as arguments to *TSput* or *TSreplace*. The description or documentation will be retrieved as part of the series object with *TSget* only if this is specified with the logical arguments *TSdescription* and *TSdoc*. They can also be retrieved directly from the database with the functions *TSdescription* and *TSdoc*.

```

> z <- ts(matrix(rnorm(10), 10, 1), start = c(1990, 1), frequency = 1)
> TSreplace(z, serIDs = "Series1", con)

[1] TRUE

> zz <- TSget("Series1", con)
> TSreplace(z, serIDs = "Series1", con, TSdescription = "short rnorm series",
  TSdoc = "Series created as an example in the vignette.")

[1] TRUE

```

```

> zz <- TSget("Series1", con, TSdescription = TRUE, TSdoc = TRUE)
> start(zz)

[1] 1990    1

> end(zz)

[1] 1999    1

> TSdescription(zz)

[1] "short rnorm series from testvigFame.db retrieved 2011-06-06 18:52:34"

> TSdoc(zz)

[1] "Series created as an example in the vignette."

> TSdescription("Series1", con)

[1] "short rnorm series"

> TSdoc("Series1", con)

[1] "Series created as an example in the vignette."

> z <- ts(rnorm(10), start = c(1990, 1), frequency = 1)
> seriesNames(z) <- "vec"
> TSreplace(z, con)

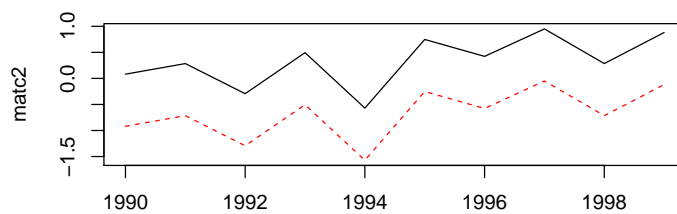
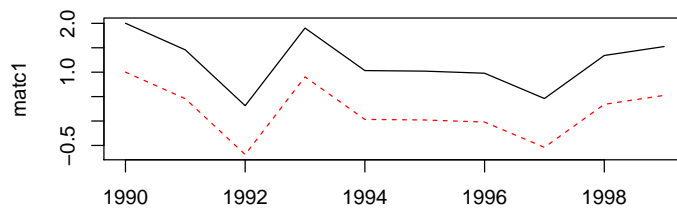
[1] TRUE

> zz <- TSget("vec", con)
> z <- ts(matrix(rnorm(20), 10, 2), start = c(1990, 1), frequency = 1)
> seriesNames(z) <- c("matc1", "matc2")
> TSreplace(z, con)

[1] TRUE

> tfplot(z + 1, TSget(c("matc1", "matc2"), con), lty = c("solid",
  "dashed"), col = c("black", "red"))

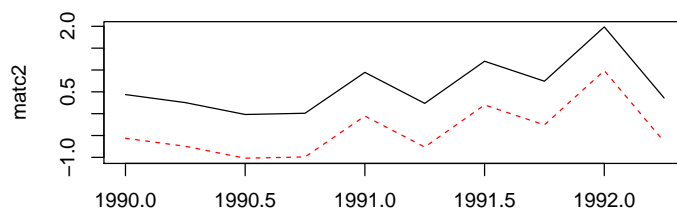
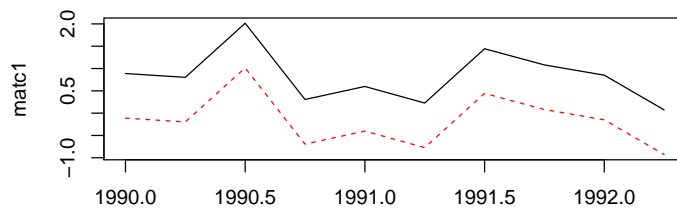
```



```
> z <- ts(matrix(rnorm(20), 10, 2), start = c(1990, 1), frequency = 4)
> seriesNames(z) <- c("matc1", "matc2")
> TSreplace(z, con)

[1] TRUE

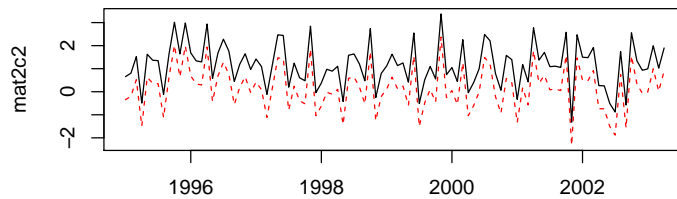
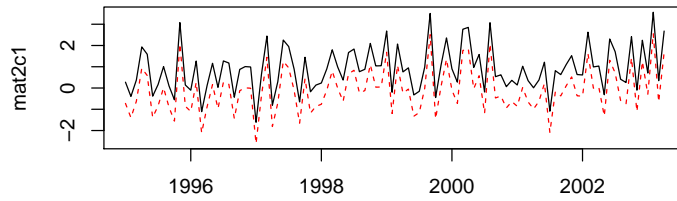
> tfplot(z + 1, TSget(c("matc1", "matc2"), con), lty = c("solid",
  "dashed"), col = c("black", "red"))
```



```
> z <- ts(matrix(rnorm(200), 100, 2), start = c(1995, 1), frequency = 12)
> seriesNames(z) <- c("mat2c1", "mat2c2")
> TSreplace(z, con)

[1] TRUE

> tfplot(z + 1, TSget(c("mat2c1", "mat2c2"), con), lty = c("solid",
  "dashed"), col = c("black", "red"))
```

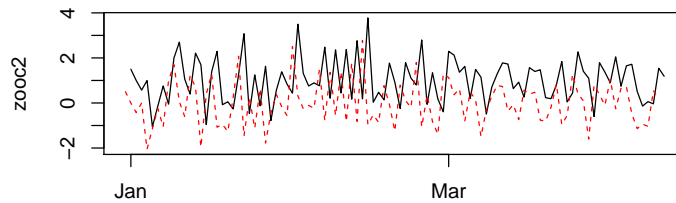
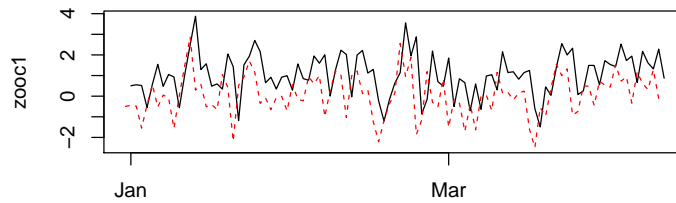


The following examples use dates and times which are not handled by *ts*, so the *zoo* time representation is used.

```
> require("zoo")
> z <- zoo(matrix(rnorm(200), 100, 2), as.Date("1990-01-01") +
  0:99)
> seriesNames(z) <- c("zooc1", "zooc2")
> TSreplace(z, con)

[1] TRUE

> tfplot(z + 1, TSget(c("zooc1", "zooc2"), con), lty = c("solid",
  "dashed"), col = c("black", "red"))
```



Beware that (as of Dec, 2010) there is a bug with weekly dates:

```
> z <- zoo(matrix(rnorm(200), 100, 2), as.Date("1990-01-01") +
  0:99 * 7)
> seriesNames(z) <- c("zooWc1", "zooWc2")
> TSreplace(z, con)

[1] TRUE

> z2 <- TSget(c("zooWc1", "zooWc2"), con)
> time(z)

[1] "1990-01-01" "1990-01-08" "1990-01-15" "1990-01-22" "1990-01-29"
[6] "1990-02-05" "1990-02-12" "1990-02-19" "1990-02-26" "1990-03-05"
[11] "1990-03-12" "1990-03-19" "1990-03-26" "1990-04-02" "1990-04-09"
[16] "1990-04-16" "1990-04-23" "1990-04-30" "1990-05-07" "1990-05-14"
[21] "1990-05-21" "1990-05-28" "1990-06-04" "1990-06-11" "1990-06-18"
[26] "1990-06-25" "1990-07-02" "1990-07-09" "1990-07-16" "1990-07-23"
[31] "1990-07-30" "1990-08-06" "1990-08-13" "1990-08-20" "1990-08-27"
[36] "1990-09-03" "1990-09-10" "1990-09-17" "1990-09-24" "1990-10-01"
[41] "1990-10-08" "1990-10-15" "1990-10-22" "1990-10-29" "1990-11-05"
[46] "1990-11-12" "1990-11-19" "1990-11-26" "1990-12-03" "1990-12-10"
[51] "1990-12-17" "1990-12-24" "1990-12-31" "1991-01-07" "1991-01-14"
[56] "1991-01-21" "1991-01-28" "1991-02-04" "1991-02-11" "1991-02-18"
```

```

[61] "1991-02-25" "1991-03-04" "1991-03-11" "1991-03-18" "1991-03-25"
[66] "1991-04-01" "1991-04-08" "1991-04-15" "1991-04-22" "1991-04-29"
[71] "1991-05-06" "1991-05-13" "1991-05-20" "1991-05-27" "1991-06-03"
[76] "1991-06-10" "1991-06-17" "1991-06-24" "1991-07-01" "1991-07-08"
[81] "1991-07-15" "1991-07-22" "1991-07-29" "1991-08-05" "1991-08-12"
[86] "1991-08-19" "1991-08-26" "1991-09-02" "1991-09-09" "1991-09-16"
[91] "1991-09-23" "1991-09-30" "1991-10-07" "1991-10-14" "1991-10-21"
[96] "1991-10-28" "1991-11-04" "1991-11-11" "1991-11-18" "1991-11-25"

```

```
> time(z2)
```

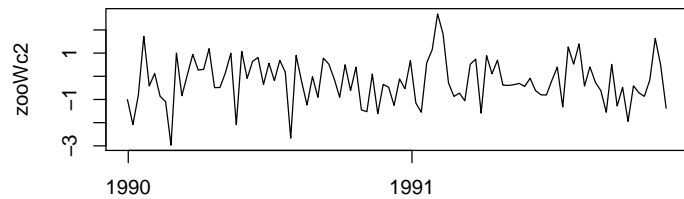
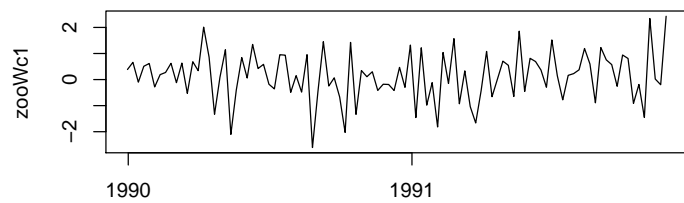
```

[1] "1989-12-31" "1990-01-07" "1990-01-14" "1990-01-21" "1990-01-28"
[6] "1990-02-04" "1990-02-11" "1990-02-18" "1990-02-25" "1990-03-04"
[11] "1990-03-11" "1990-03-18" "1990-03-25" "1990-04-01" "1990-04-08"
[16] "1990-04-15" "1990-04-22" "1990-04-29" "1990-05-06" "1990-05-13"
[21] "1990-05-20" "1990-05-27" "1990-06-03" "1990-06-10" "1990-06-17"
[26] "1990-06-24" "1990-07-01" "1990-07-08" "1990-07-15" "1990-07-22"
[31] "1990-07-29" "1990-08-05" "1990-08-12" "1990-08-19" "1990-08-26"
[36] "1990-09-02" "1990-09-09" "1990-09-16" "1990-09-23" "1990-09-30"
[41] "1990-10-07" "1990-10-14" "1990-10-21" "1990-10-28" "1990-11-04"
[46] "1990-11-11" "1990-11-18" "1990-11-25" "1990-12-02" "1990-12-09"
[51] "1990-12-16" "1990-12-23" "1990-12-30" "1991-01-06" "1991-01-13"
[56] "1991-01-20" "1991-01-27" "1991-02-03" "1991-02-10" "1991-02-17"
[61] "1991-02-24" "1991-03-03" "1991-03-10" "1991-03-17" "1991-03-24"
[66] "1991-03-31" "1991-04-07" "1991-04-14" "1991-04-21" "1991-04-28"
[71] "1991-05-05" "1991-05-12" "1991-05-19" "1991-05-26" "1991-06-02"
[76] "1991-06-09" "1991-06-16" "1991-06-23" "1991-06-30" "1991-07-07"
[81] "1991-07-14" "1991-07-21" "1991-07-28" "1991-08-04" "1991-08-11"
[86] "1991-08-18" "1991-08-25" "1991-09-01" "1991-09-08" "1991-09-15"
[91] "1991-09-22" "1991-09-29" "1991-10-06" "1991-10-13" "1991-10-20"
[96] "1991-10-27" "1991-11-03" "1991-11-10" "1991-11-17" "1991-11-24"

```

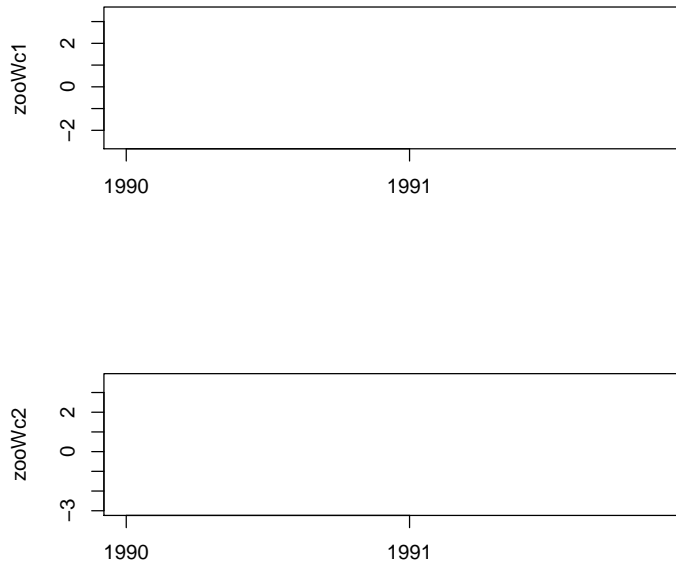
and while this works:

```
> tfplot(z2)
```



this may not:

```
> tfplot(z + 1, z2, col = c("black", "red"), lty = c("dashed",
  "solid"))
```



### 3 Examples Using Web Data

This section illustrates fetching data from a web server and loading it into the database. This would be a very slow way to load a database, but provides examples of different kinds of time series data. The fetching is done with *TShistQuote* which provides a wrapper for *get.hist.quote* from package *tseries* to give syntax consistent with the *TSdbi*.

Fetching data may fail due to lack of an Internet connection or delays.

The connection *con* established above to the database will be used to save data but, to make the use of the two connections more obvious, neither will be set as the default:

```
> options(TSconnection = NULL)
```

Now connect to the web server and fetch data:

```
> require("TShistQuote")
> Yahoo <- TSconnect("histQuote", dbname = "yahoo")
> x <- TSget("^gspc", quote = "Close", con = Yahoo)
> plot(x)
> tfplot(x)
> TSrefperiod(x)
```

```

[1] "Close"

> TSdescription(x)

[1] "^gspc Close from yahoo"

> TSdoc(x)

[1] "^gspc Close from yahoo retrieved 2011-06-06 18:52:40"

```

Then write the data to the local server, specifying table B for business day data (using `TSreplace` in case the series is already there from running this example previously):

```

> TSreplace(x, serIDs = "gspc", Table = "B", con = con)

[1] TRUE

    and check the saved version:

> TSrefperiod(TSget(serIDs = "gspc", con = con))

[1] "daily"

> TSdescription("gspc", con = con)

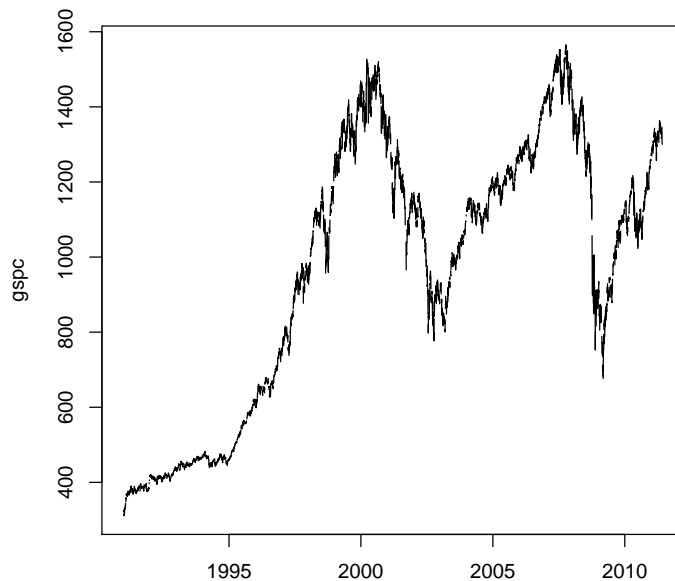
[1] "NA"

> TSdoc("gspc", con = con)

[1] "NA"

> tfplot(TSget(serIDs = "gspc", con = con))

```



```

> x <- TSget("ibm", quote = c("Close", "Vol"), con = Yahoo)
> TSreplace(x, serIDs = c("ibm.Cl", "ibm.Vol"), con = con, Table = "B",
  TSdescription. = c("IBM Close", "IBM Volume"), TSdoc. = paste(c("IBM Close retrieved on ", Sys.Date()),
    "IBM Volume retrieved on "), Sys.Date()))

[1] TRUE

> z <- TSget(serIDs = c("ibm.Cl", "ibm.Vol"), TSdescription = TRUE,
  TSdoc = TRUE, con = con)
> TSdescription(z)

[1] "IBM Close from testvigFame.db retrieved 2011-06-06 18:52:47"
[2] "IBM Volume from testvigFame.db retrieved 2011-06-06 18:52:47"

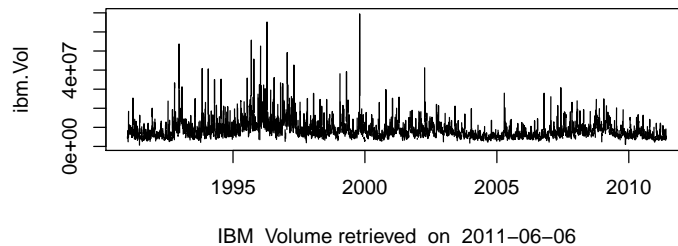
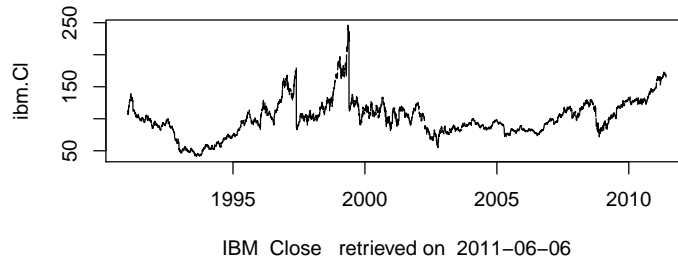
> TSdoc(z)

[1] "IBM Close retrieved on 2011-06-06"
[2] "IBM Volume retrieved on 2011-06-06"

> tfplot(z, xlab = TSdoc(z), Title = TSdescription(z))
> tfplot(z, Title = "IBM", start = "2007-01-01")

```

IBM Close from testvigFame.db retrieved 2011-06-06 18:53:00  
 IBM Volume from testvigFame.db retrieved 2011-06-06 18:53:00



```
> dbDisconnect(con)
> dbDisconnect(Yahoo)
```

### 3.1 Examples Using TSdbi with ets

These examples use a database called "ets" which is available at the Bank of Canada. This set of examples illustrates how the programs might be used if a larger database is available. Typically a large database would be installed using database scripts directly rather than from R with *TSput* or *TSreplace*.

The following are wrapped in *if (!inherits(con, "try-error"))* so that the vignette will build even when the database is not available. This seems to require an explicit call to *print()*, but that is not usually needed to display results below. Another artifact of this is that results printed in the *if* block do not display until the end of the block.

```
> conets <- try(TSconnect("fame", dbname = "ets /home/ets/db/etsintoecd.db",
  accessMode = "read"))
> if (!inherits(conets, "try-error")) {
  print(TSmeta("M.SDR.CCUSMA02.ST", con = conets))
}
```

Assuming 'ets /home/ets/db/etsintoecd.db' is a Fame Server path due to white space.  
 Assuming 'ets /home/ets/db/etsintoecd.db' is a Fame Server path due to white space.

```

An object of class "TSmeta"
Slot "TSdescription":
[1] "Special Drawing Right---Currency Conversions/US$ exchange rate/Average of daily rates/M

Slot "TSdoc":
[1] "Special Drawing Right---Currency Conversions/US$ exchange rate/Average of daily rates/M

Slot "TSlabel":
[1] NA

Slot "serIDs":
[1] "M.SDR.CCUSMA02.ST"

Slot "conType":
[1] "TSfameConnection"
attr(,"package")
[1] "TSfame"

Slot "DateStamp":
[1] NA

Slot "dbname":
[1] "ets /home/ets/db/etsintoecd.db"

Slot "hasVintages":
[1] FALSE

Slot "hasPanels":
[1] FALSE

```

The above connection is recognized to be a server because of the white space between "ets" and the database name. This produces a warning message from the *fame* package call, because it is guessing that a Fame server call is intended. An alternative way to establish the connection is to explicitly indicate that the server functionality is to be used:

```

> conServer <- try(TSconnect("fameServer", dbname = "/home/ets/db/etsintoecd.db",
  service = "2959", host = "ets", user = "", password = "",
  stopOnFail = TRUE))
> if (!inherits(conServer, "try-error")) {
  print(TSmeta("M.SDR.CCUSMA02.ST", con = conServer))
}

```

```

An object of class "TSmeta"
Slot "TSdescription":
[1] "Special Drawing Right---Currency Conversions/US$ exchange rate/Average of daily rates/M

```

```

Slot "TSdoc":
[1] "Special Drawing Right---Currency Conversions/US$ exchange rate/Average of daily rates/M

Slot "TSlabel":
[1] NA

Slot "serIDs":
[1] "M.SDR.CCUSMA02.ST"

Slot "conType":
[1] "TSfameServerConnection"
attr(,"package")
[1] "TSfame"

Slot "DateStamp":
[1] NA

Slot "dbname":
[1] "/home/ets/db/etsintoecd.db"

Slot "hasVintages":
[1] FALSE

Slot "hasPanels":
[1] FALSE

```

This does not give the warning message, and for that reason will be used below, but they are interchangeable.

```

> if (!inherits(conServer, "try-error")) {
  options(TSconnection = conServer)
  print(TSmeta("M.SDR.CCUSMA02.ST"))
  EXCH.IDs <- t(matrix(c("M.SDR.CCUSMA02.ST", "SDR/USD exchange rate",
    "M.CAN.CCUSMA02.ST", "CAN/USD exchange rate", "M.MEX.CCUSMA02.ST",
    "MEX/USD exchange rate", "M.JPN.CCUSMA02.ST", "JPN/USD exchange rate",
    "M.EMU.CCUSMA02.ST", "Euro/USD exchange rate", "M.OTO.CCUSMA02.ST",
    "OECD /USD exchange rate", "M.G7M.CCUSMA02.ST", "G7 /USD exchange rate",
    "M.E15.CCUSMA02.ST", "Euro 15. /USD exchange rate"),
    2, 8))
  print(TSdates(EXCH.IDs[, 1]))
  z <- TSdates(EXCH.IDs[, 1])
  print(start(z))
  print(end(z))
  tfplot(TSget(serIDs = "M.CAN.CCUSMA02.ST", conServer), ylab = "CDN dollors per US doll
    Title = "Canada - U.S. Exchange Rate")
}

```

```

An object of class "TSmeta"
Slot "TSdescription":
[1] "Special Drawing Right---Currency Conversions/US$ exchange rate/Average of daily rates/M

Slot "TSdoc":
[1] "Special Drawing Right---Currency Conversions/US$ exchange rate/Average of daily rates/M

Slot "TSlabel":
[1] NA

Slot "serIDs":
[1] "M.SDR.CCUSMA02.ST"

Slot "conType":
[1] "TSfameServerConnection"
attr(,"package")
[1] "TSfame"

Slot "DateStamp":
[1] NA

Slot "dbname":
[1] "/home/ets/db/etsintoecd.db"

Slot "hasVintages":
[1] FALSE

Slot "hasPanels":
[1] FALSE

      [,1]
[1,] "M.SDR.CCUSMA02.ST from 1960 1 to 2011 3      12"
[2,] "M.CAN.CCUSMA02.ST from 1960 1 to 2011 3      12"
[3,] "M.MEX.CCUSMA02.ST from 1963 1 to 2011 3      12"
[4,] "M.JPN.CCUSMA02.ST from 1960 1 to 2011 3      12"
[5,] "M.EMU.CCUSMA02.ST from 1979 1 to 2011 3      12"
[6,] "M.OTO.CCUSMA02.ST not available"
[7,] "M.G7M.CCUSMA02.ST not available"
[8,] "M.E15.CCUSMA02.ST not available"
[[1]]
[1] 1960      1

[[2]]
[1] 1960      1

[[3]]

```

[1] 1963 1

[[4]]

[1] 1960 1

[[5]]

[1] 1979 1

[[6]]

[1] NA

[[7]]

[1] NA

[[8]]

[1] NA

[[1]]

[1] 2011 3

[[2]]

[1] 2011 3

[[3]]

[1] 2011 3

[[4]]

[1] 2011 3

[[5]]

[1] 2011 3

[[6]]

[1] NA

[[7]]

[1] NA

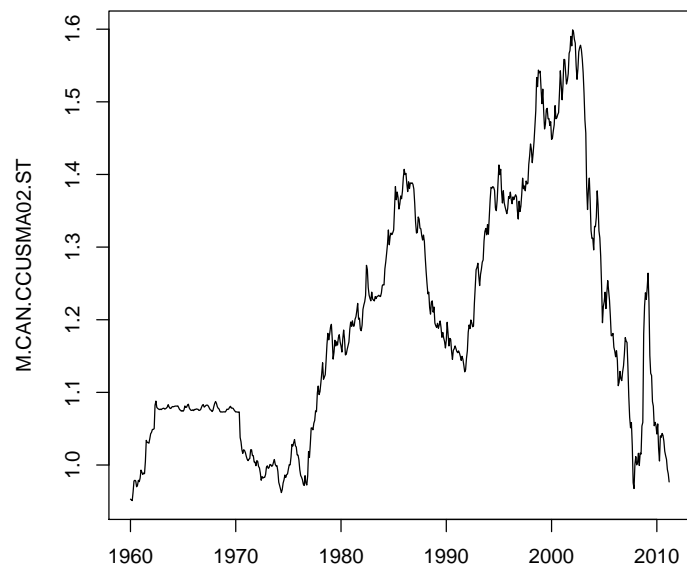
[[8]]

[1] NA



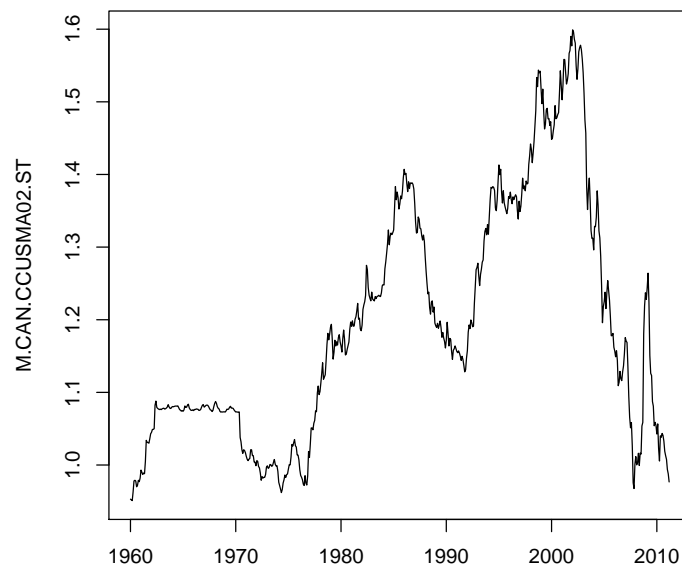
```
> if (!inherits(conServer, "try-error")) {
  print(TSdescription(TSget("M.CAN.CCUSMA02.ST", TSdescription = TRUE)))
  print(TSdescription("M.CAN.CCUSMA02.ST"))
  print(TSdoc(TSget("M.CAN.CCUSMA02.ST", TSdoc = TRUE)))
  print(TSdoc("M.CAN.CCUSMA02.ST"))
  tfplot(TSget("M.CAN.CCUSMA02.ST", names = "M.CAN.CCUSMA02.ST",
    conServer))
}
```

```
[1] "CANADA---Currency Conversions/US$ exchange rate/Average of daily rates/National currenc
[1] "CANADA---Currency Conversions/US$ exchange rate/Average of daily rates/National currenc
[1] "CANADA---Currency Conversions/US$ exchange rate/Average of daily rates/National currenc
[1] "CANADA---Currency Conversions/US$ exchange rate/Average of daily rates/National currenc
```

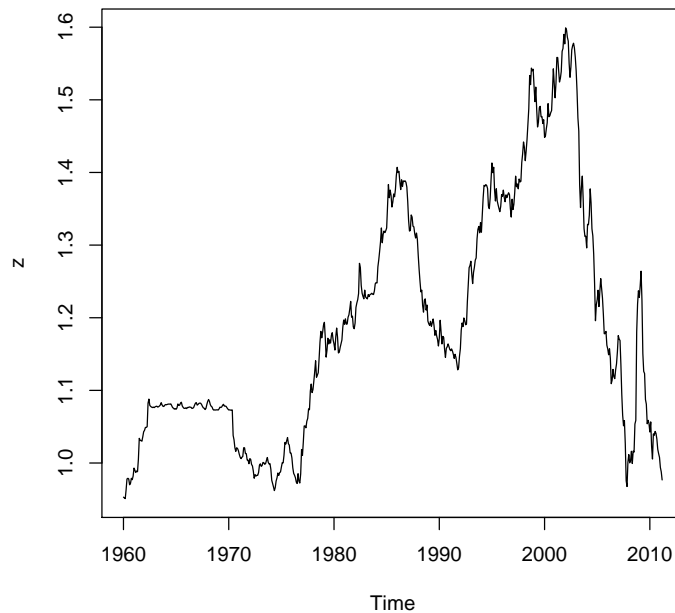


```
> if (!inherits(conServer, "try-error")) {
  z <- TSget("M.CAN.CCUSMA02.ST", TSdescription = TRUE)
  tfplot(z, Title = strsplit(TSdescription(z), "//")[[1]][1:2])
}
```

of daily rates/National currency:USD---CAN CAD/USD exchange  
UNITS = CAD/USD



```
> if (!inherits(conServer, "try-error")) {  
  plot(z)  
}
```



```
> if (!inherits(conServer, "try-error")) {
  options(TSconnection = NULL)
}
```

Finally, `dbDisconnect` closes the connection if it is a Fame Server connect, and does nothing otherwise, but is provided for compatability with other connections.

```
> dbDisconnect(conets)
> dbDisconnect(conServer)
> dbDisconnect(con)
> options(TSconnection = NULL)
```

A simple mechanism for accessing vintages of data stored in different Fame databases is available as illustrated by the following examples.

```
> dbs <- paste("ets /home/ets5/mfadata/etsmfacansim_", c("20110513.db",
  "20060526.db", "20110520.db"), sep = "")
> names(dbs) <- c("2011-05-13", "2006-05-26", "2011-05-20")
> conetsV <- try(TSconnect("fame", dbname = dbs, "read", current = "2011-05-13"))
> if (!inherits(conetsV, "try-error")) {
  z <- TSget("V122646", con = conetsV, vintage = c("2011-05-13",
    "2006-05-26"))
}
```

```

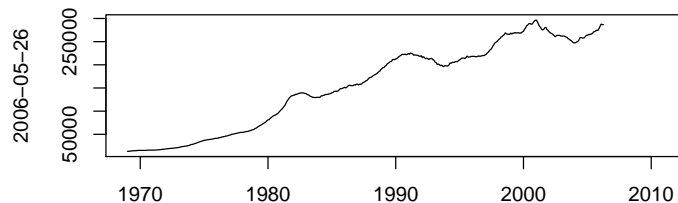
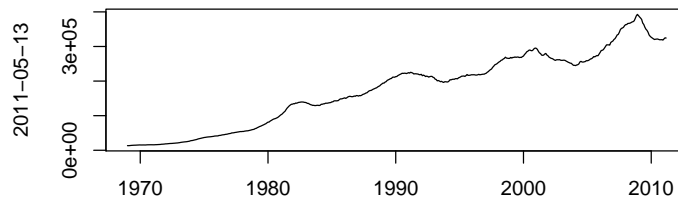
    tfplot(z)
    options(TSconnection = conetsV)
    z <- TSget("V122646")
    z <- TSget(c("V122646", "V122647"))
    tfplot(z)
    dbDisconnect(conetsV)
  }

```

```

Assuming 'ets /home/ets5/mfadata/etsmfacansim_20110513.db' is a Fame Server path due to whit
Assuming 'ets /home/ets5/mfadata/etsmfacansim_20060526.db' is a Fame Server path due to whit
Assuming 'ets /home/ets5/mfadata/etsmfacansim_20110513.db' is a Fame Server path due to whit
Assuming 'ets /home/ets5/mfadata/etsmfacansim_20110513.db' is a Fame Server path due to whit
Assuming 'ets /home/ets5/mfadata/etsmfacansim_20110513.db' is a Fame Server path due to whit
[1] TRUE

```



```

> dbs <- paste("/home/ets5/mfadata/etsmfacansim_", c("20110513.db",
  "20060526.db", "20110520.db"), sep = "")
> names(dbs) <- c("2011-05-13", "2006-05-26", "2011-05-20")
> conServerV <- try(TSconnect("fameServer", dbname = dbs, service = "2959",
  host = "ets", stopOnFail = TRUE))
> if (!inherits(conServerV, "try-error")) {
  r <- TSget("V122646", con = conServerV, vintage = c("2011-05-13",

```

```

        "2006-05-26"))
    tfplot(r)
    dbDisconnect(conServerV)
}

[1] TRUE

```

