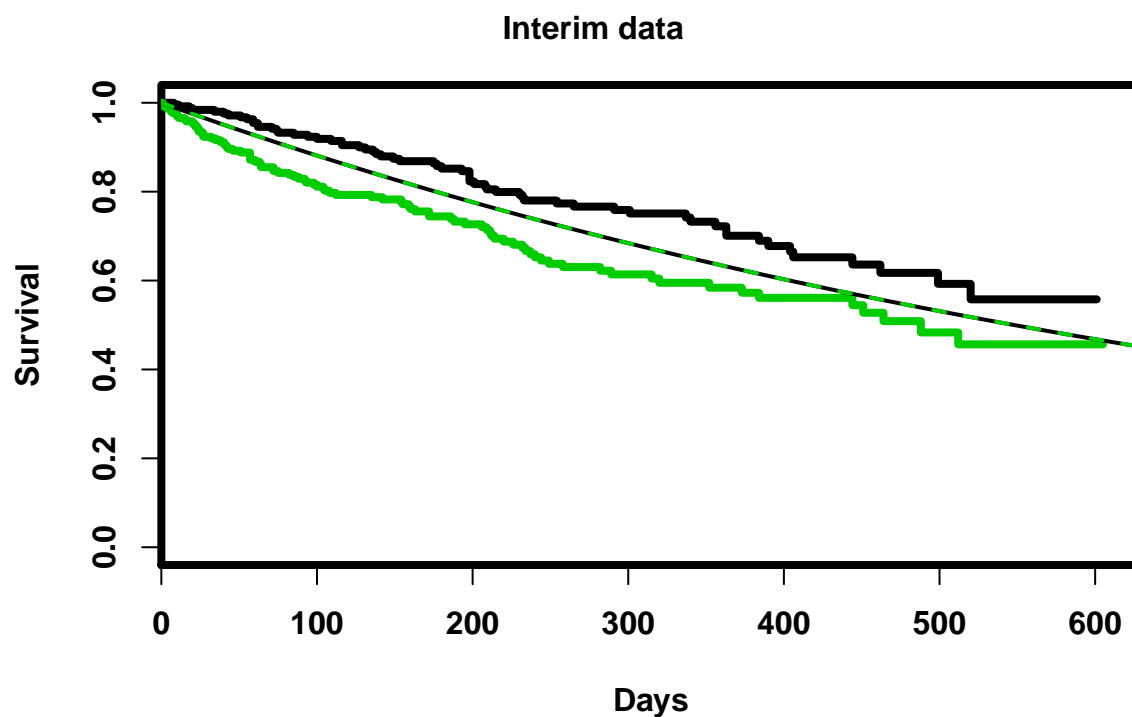


nph: report for conditional power

```
head(dat)
```

```
##      group inclusion  y yCalendar event cumEvents
## 697      1         4 10      14    TRUE         1
## 589      1        21  1      22    TRUE         2
##  96      1        32  1      33    TRUE         3
## 384      1        31  5      36    TRUE         4
## 202      1         2 46      48    TRUE         5
## 177      1        20 41      61    TRUE         6
```

```
intplot(dat, K5, B5, main = "Interim data")
```



```
# Output results -----
p_results <-
  data.frame(
    Test = c("Maximum Logrank", rep("Weighted Logrank", 4)),
    rho = c("0011", 0, 0, 1, 1),
    gamma = c("0101", 0, 1, 0, 1),
    power = cp_pow)
```

```
p_results
```

```
##           Test  rho gamma power
## 1 Maximum Logrank 0011 0101    0
## 2 Weighted Logrank  0    0    0
## 3 Weighted Logrank  0    1    0
## 4 Weighted Logrank  1    0    0
## 5 Weighted Logrank  1    1    0
```

Test	rho	gamma	power
Maximum Logrank	0011	0101	0
Weighted Logrank	0	0	0
Weighted Logrank	0	1	0
Weighted Logrank	1	0	0
Weighted Logrank	1	1	0